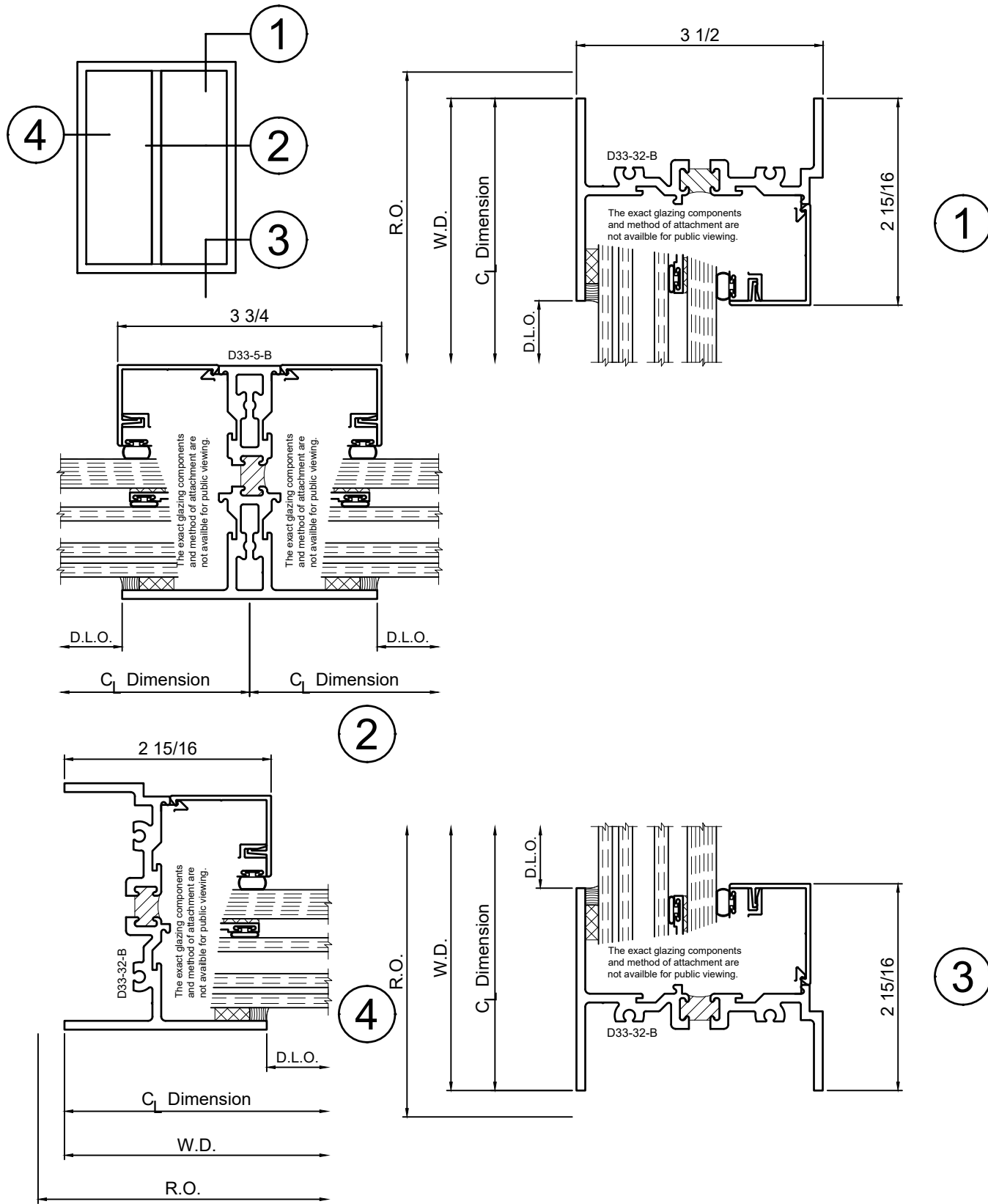


3-1/2" Thermal Fixed Windows for FEMA 361 / ICC 500 application

Product Details - Fixed - Picture Window



Note: Multiple configurations of this window system are available. Refer to the WINCO website for additional options or contact your local WINCO Sales Representative for information.



WINCO RESERVES THE RIGHT TO MODIFY OR CHANGE INFORMATION WITHIN THIS BOOK WHEN DEEMED NECESSARY FOR PRODUCT IMPROVEMENT

© WINCO WINDOW COMPANY, INC. 2021

SCALE 6"=1'-0"

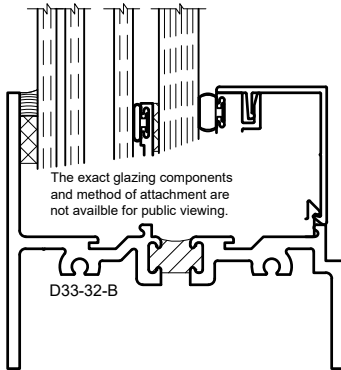
3-1/2" Thermal Fixed Windows for FEMA 361 / ICC 500 application

Product Details - Glazing Options



Note: Multiple configurations of this window system are available. Refer to the WINCO website for additional options or contact your local WINCO Sales Representative for information.

WINCO RESERVES THE RIGHT TO MODIFY OR CHANGE INFORMATION WITHIN THIS BOOK WHEN DEEMED NECESSARY FOR PRODUCT IMPROVEMENT



FEMA 361 / ASTM
E1886 / 1996 Missile "E"
1" Laminated I.G. with
1/2" Polycarbonate
Secondary

© WINCO WINDOW COMPANY, INC. 2021

SCALE 6"=1'-0"